

# FOR SALE

## EIT #37 TRANSPORTABLE COTTAGE



**\$112,000** inc GST  
ex yard



- 59.4m<sup>2</sup> building area plus 10.2m<sup>2</sup> un-covered deck
- Spacious open plan kitchen/ dining/ living area, 1 bedroom with wash room
- Exterior cladding 12mm Shadowclad Ultra Groove, preprimed
- Trussed roof construction with plastered Gib board ceiling
- Double glazed powdercoated aluminium joinery colour silver pearl
- Corrugated Colorsteel roof colour - Grey Friars
- Electrical fit-out with electrical certificate & Heat Pump supplied
- Piped for Rinnai external gas water heater, kitchen, WC, laundry and vanity
- Interior walls plastered to a prepaint finish
- Fibreglass one piece Roseware shower with mixer installed (pre-plumb)
- Interior doors and hardware supplied and fitted

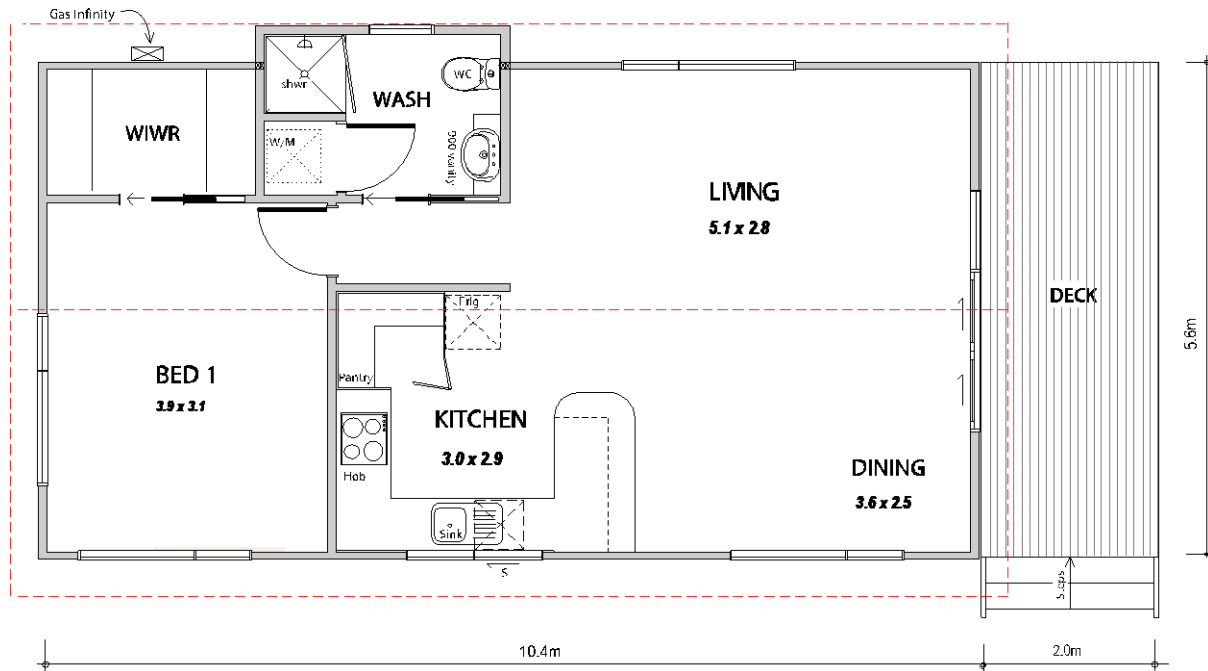
Continued next page...

Pricing for this Cottage as is:

**\$112,000 incl. GST**

ex Cottages NZ Hastings yard.

Delivery and foundations can be quoted subject to a site visit.



**Figure 1 - Sample plan of finished layout**

Please note this building has been prepared by the EIT trades school of carpentry and priced as built. The following work is required to complete the cottage and is not included in price:

- Supply and fit, 750mm vanity, WC, shower door,
- Supply and fix shower rail, vanity mixer, laundry fittings and kitchen mixer
- Supply kitchen joinery and appliances
- Wardrobe cupboard fitout
- Fit and supply gas water heater and regulators
- Paint interior and exterior
- Door stops and miscellaneous hardware
- Select and install floor coverings

Onsite project work required:

- Site specific plans for council application
- Connection to services - Drainage / Water / Power / Phone
- Effluent system or hook up
- Delivery to site
- Site works or site engineering
- Council fees



**We can supply prices for these options if required. To view this home visit:**

**Cottages NZ 1139 Maraekakaho Road, HASTINGS or Ph 06-870-8979 to make an appointment.**

We also have a range of larger and smaller buildings please contact us or visit our website.

[www.cottagesnz.co.nz](http://www.cottagesnz.co.nz)

HDC – BC 302597

EIT #37 - 1 BEDROOM 59M2 COTTAGE

PAGE 2